

# 2019/20

## Year in Numbers

### Our People

 **543** scientists and staff  
(3% increase from 2018/19)

 **263** scientists  
(3% increase from 2018/19)

 **280** staff  
(2% increase from 2018/19)



**44%**  
of scientists work from sites other than ICES Central

**39%**  
of research staff work from sites other than ICES Central

**551**  
graduate, medical and post-graduate trainees mentored by ICES scientists



**280**  
graduate students accessing ICES data

### Research Capacity

**7** sites across Ontario



**8** research programs



**100** data holdings

**209** new data sharing agreements and amendments



**10**  
primary data collection studies involving 79 hospitals

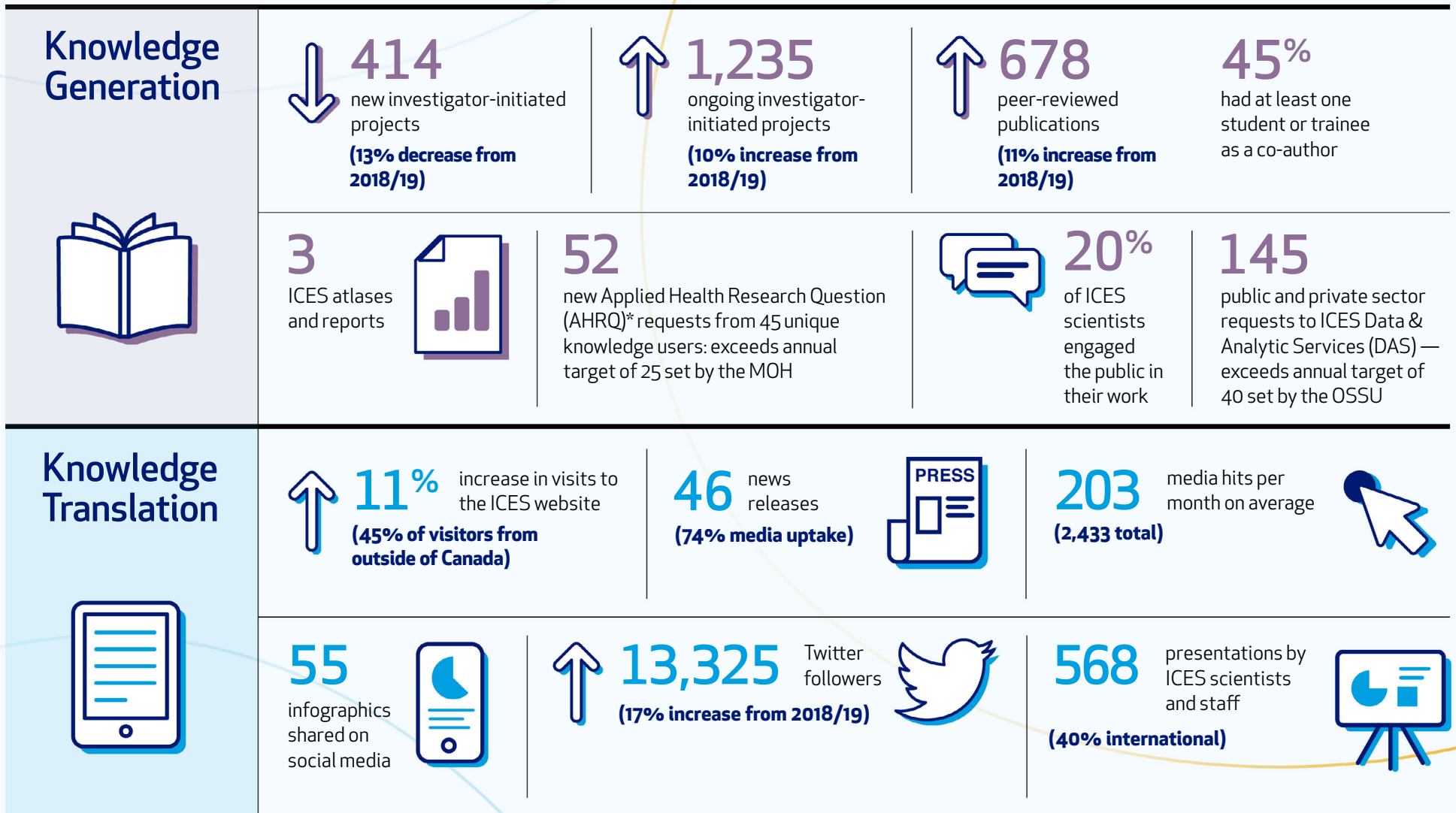
**54**  
new awards, including salary support and scientific achievement, received by ICES scientists



**35%**  
overall grant success rate on 235 grant submissions



# 2019/20 Year in Numbers



\*An AHRQ is a question posed by a health system policymaker or provider – a knowledge user – to obtain research evidence that informs planning, policy or program development that will benefit the entire Ontario health system.